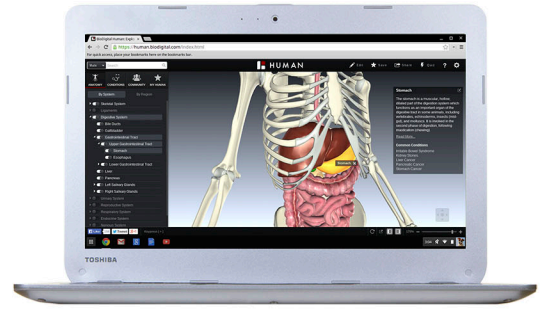
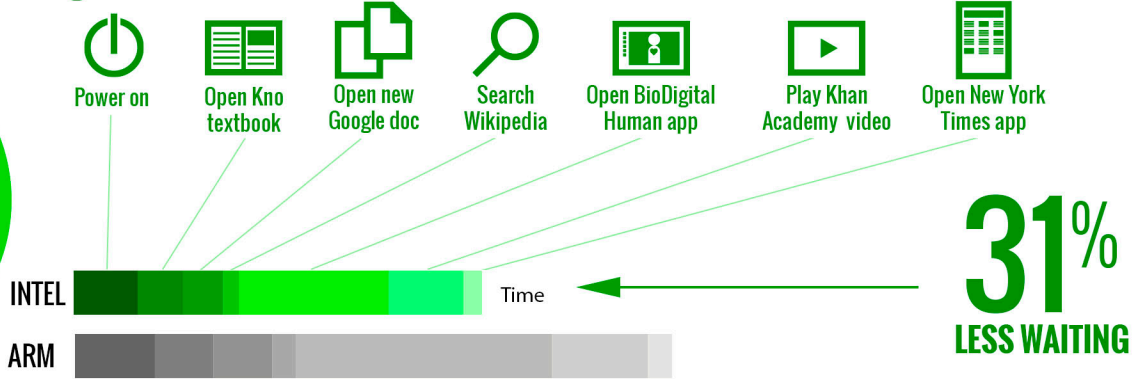


Less waiting, more learning

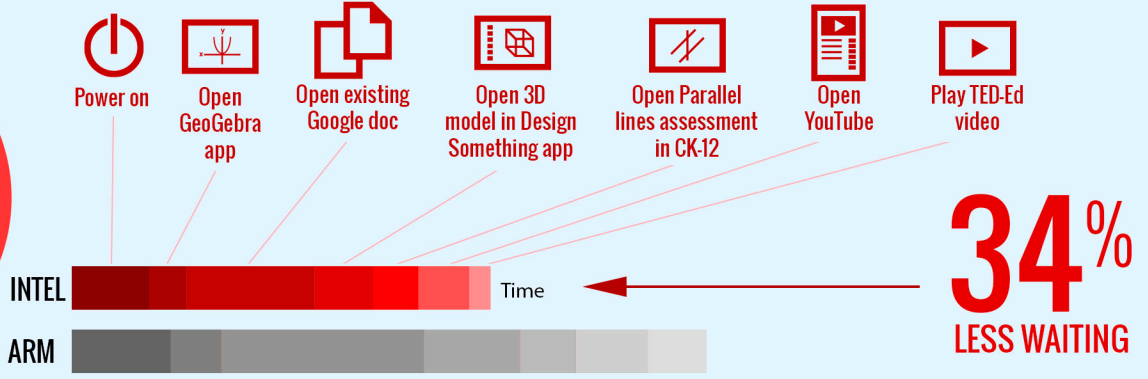
The Intel® processor-powered Toshiba Chromebook was faster than the ARM®-based Samsung Chromebook 2 in every scenario we tested, and had longer battery life.



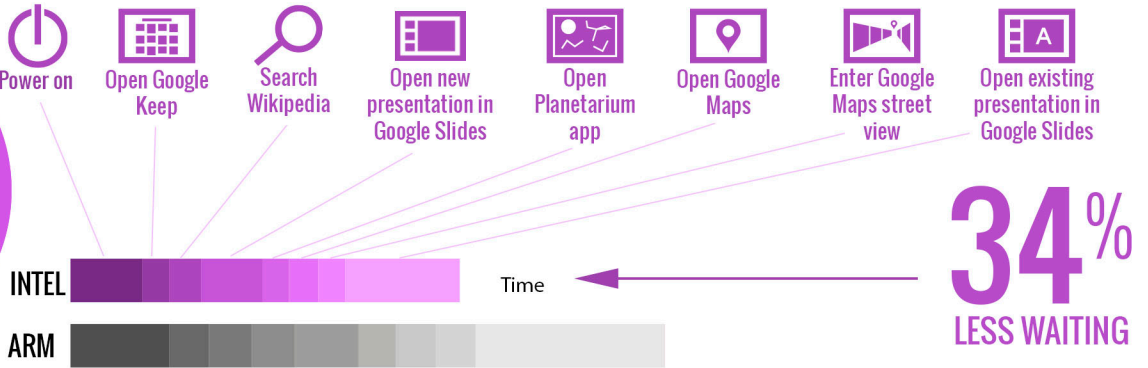
Reading a textbook and taking notes online



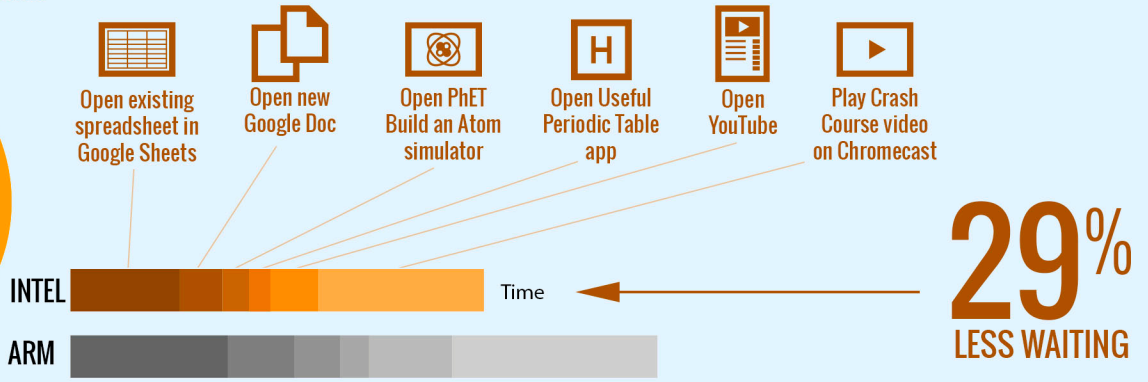
Doing math homework online



Creating an English presentation

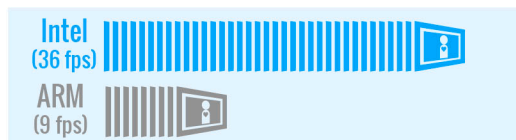


Teaming up in science class



300% MORE FRAMES PER SECOND while rendering an anatomy simulation

13% LONGER BATTERY LIFE while browsing the Web



Read the full report at <http://facts.pt/1t3IWLb>



Copyright 2014 Principled Technologies, Inc. Based on "Intel processor-powered Toshiba Chromebook in the classroom," a Principled Technologies Report, June 2014. Principled Technologies® is a registered trademark of Principled Technologies, Inc. All other product names are the trademarks of their respective owners.