

TABLETS FOR BUSINESS: WORKING WITH OFFICE 365 ON THE INTEL CORE PROCESSOR-POWERED TABLET VS. IPAD, ANDROID, AND WINDOWS RT TABLETS

Get the Full Office 365 on a Tablet with Intel Inside®



All the features and functionality available only in desktop versions of Word®, Excel®, PowerPoint®, and Outlook®



Offline access to Office applications and the ability to work on documents while offline



Secure collaboration and the ability to open password-protected Office documents



All the deployment options available to IT with Office 365

Open documents for editing up to 88 percent faster*

 **Intel® Core™ i3 processor-based tablet**
(Locally installed applications)

Apple iPad
(Office Web Apps)

Windows RT tablet
(Office Web Apps)

Android tablet
(Office Web Apps)

3s

17s

22s

Did not support editing

Average time to open documents for editing (faster is better)

*versus Office 365 on an Apple® iPad®, a representative Android™ tablet, and a representative Windows RT tablet

Microsoft is a trademark of the Microsoft group of companies

What good is having a sleek and responsive tablet if you can't use it to get real work done? In our labs, we compared the Office 365 experience on a number of representative tablets in a business environment. Our findings? Unlike the Apple iPad, Android tablet, and Windows RT tablet, only the Intel Core processor-powered tablet:

- Provided all the features and functionality available in desktop versions of Word, Excel, PowerPoint, and Outlook
- Accessed Office applications and SkyDrive Pro documents while offline
- Opened password-protected documents for secure collaboration with documents stored in the cloud
- Supported all the ways IT can deploy applications with Office 365

The Intel Core processor-powered tablet also opened documents for editing up to 88 percent faster than the other tablets, to get you working with minimal wait.



A PRINCIPLED TECHNOLOGIES TEST REPORT

Commissioned by Intel Corp.

APRIL 2013

A TABLET DESIGNED WITH BUSINESS USERS IN MIND

Can you get real work done on your tablet? Does your tablet facilitate productivity and collaboration in the office? We found the Intel Core processor-powered tablet got the job done.

More business are deploying tablets and more employees are bringing them to the office from home, expecting these devices to fit seamlessly into the office environment and daily workflow. Because both employers and employees need these tablets to facilitate and not hinder productivity and collaboration, we compared the experience working with Office 365 on the Intel Core processor-powered tablet and the other test tablets.

We found a number of limitations in Office 365 on the iPad, Android tablet, and Windows RT tablet that would limit end-user productivity and collaboration in the office, including the inability to edit on the Android tablet. In comparison, we found the desktop applications available through Office 365 on the Intel Core processor-powered tablet delivered all the features and functionality likely required to get real work done:

Only the Intel Core processor-powered tablet with Office 365 provided...	Which means...
Responsive Office desktop applications	You can start editing documents faster
Offline access to applications and documents	You can work without being connected
The ability to open password-protected documents	You can collaborate securely with documents stored in the cloud
Word documents with full formatting when editing and tracked changes when collaborating with others	You can collaborate better with others in Word
Support for CSV files, macros, data models, and external data connections	You get all the spreadsheet functionality you need in Excel
Full slide show animations and transitions support and slide show rehearsing and recording	You can create and share presentations that make the right impression
Custom due dates for flagged messages, calendar notifications, and PST support for archived messages	You can stay on top of email and meetings in Outlook

Figure 1: What the advantages of the Intel Core processor-powered tablet with Office 365 mean for your business.

For details about the specific tablets we tested, see [Appendix A](#), and for a comprehensive list of the differences in features and functionality, see [Appendix C](#).

DIFFERENT DEVICES, DIFFERENT EXPERIENCES

Only the Intel Core processor-powered tablet supported full Office desktop applications through Office 365.

Office 365 subscription licensing gives businesses the flexibility to provide Office applications to employees on more than one device, including company-provided devices and those that employees bring to the office. However, we found that different types of devices have different Office 365 application deployment options available. Of the representative tablets we tested, only the Intel Core processor-powered tablet supported all the deployment options Office 365 offers, including full Office desktop

applications installed locally or delivered virtually. Figure 2 summarizes the Office application deployment methods the different tablets could support through Office 365.

Office 365 application deployment options	Intel Core processor-powered tablet	Apple iPad	Android tablet	Windows RT tablet
Office desktop applications installed locally	✓	✗	✗	✗
Office desktop applications delivered virtually through Office on Demand or App-V	✓	✗	✗	✗
Office Web Apps through the browser	✓	✓	✓	✓

Figure 2: Office 365 application deployment options supported on the test tablets.

For the iPad, Android tablet, and Windows RT tablet, we looked at the Office Web Apps available through Office 365.

For the iPad, Android tablet, and Windows RT tablet, we looked at the Office Web Apps available through Office 365, because those tablets don't support the desktop Office applications also available through Office 365. While the Windows RT tablet ships with Microsoft Office Home & Student 2013 RT Preview, we did not include it in our analysis, as Microsoft does not officially support Office 365 on Windows RT outside of the Office Web Apps as of this report.¹ For example, we were unable to install SkyDrive Pro on the Windows RT tablet, which is required for offline access to documents stored in SkyDrive Pro.

For more info on the Office 365 application deployment methods available on the Intel Core processor-powered tablet, see [Appendix D](#).

MORE WORKING, LESS WAITING

The Intel Core processor-powered tablet opened documents for editing faster, with full Office desktop applications either installed locally or streamed through Office on Demand.

No one likes waiting for the stoplight to turn green or the Web page to load, so we investigated how quickly employees could get to editing documents in Office 365. We timed how long it took each tablet to open Office documents for editing, looking at the following:

- Intel Core processor-powered tablet – Office desktop applications installed locally and streamed via Office on Demand
- Office Web Apps delivered through the Safari browser on the iPad and through the Modern UI Internet Explorer browser on the Windows RT tablet

As Figure 3 shows, the Intel Core processor-powered tablet had Office documents ready for editing much faster than the Apple iPad and the Windows RT

¹ <http://office.microsoft.com/en-us/office365-suite-help/software-requirements-for-office-365-enterprise-and-office-365-midsize-business-HA102817357.aspx>

tablet – up to 71 percent faster when using Office on Demand application streaming and up to 88 percent faster using locally installed applications.

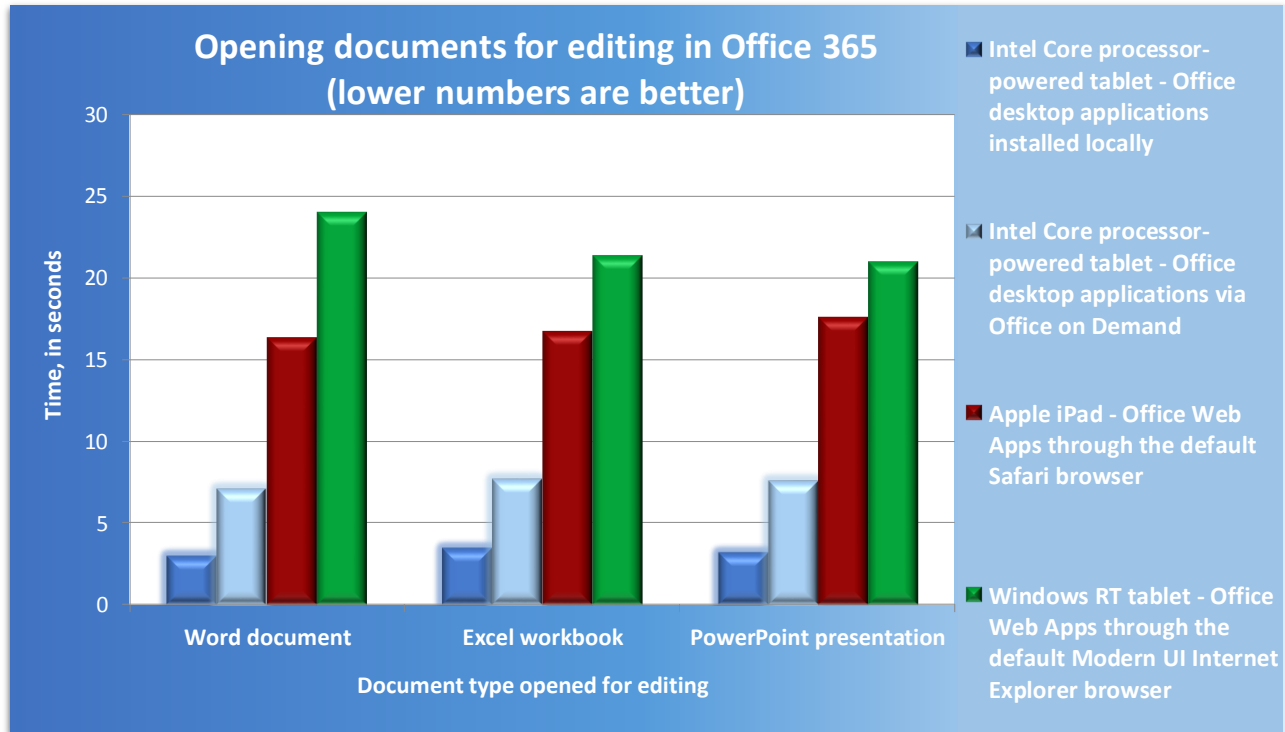


Figure 3: Time in seconds it took the tablets to display documents for editing.

You can also easily view and edit multiple Office applications at the same time on the Intel Core processor-powered tablet.

The Android tablet we tested couldn't edit documents at all, so we didn't include it in the comparison. For the Office Web Apps on the iPad and the Windows RT tablet, we included the total of the time to load the Office document initially in Reading view and the time to then load the document in Editing view.

See [Appendix B](#) for detailed results, [Appendix E](#) for step-by-step testing details, and [Appendix F](#) for the properties of the test documents we used.

GETTING WORK DONE WHEN NOT CONNECTED

The Intel Core processor-powered tablet could access Office 365 applications and documents while offline.

You're on an airplane, on the way to a client meeting, or in a coffee shop with a spotty wireless connection. Can you still get real work done? We found that with Office 365, only the Intel Core processor-powered tablet lets you access Office desktop applications and easily edit documents while offline, whether you've saved them locally on the device or in SkyDrive Pro. With Office 365 on the other tablets, you would be searching for a wireless connection, looking for a workaround, or simply out of luck.

We started working on the Intel Core processor-powered tablet in a Word document streamed through Office on Demand, and then attempted to save our changes while offline. As Figure 4 shows, the application saved changes to the

document locally, pending upload until the tablet reestablished a connection with SkyDrive Pro. As soon as we connected again to the test wireless network, the changes we made to the document were immediately synchronized with a copy of the document in SkyDrive Pro.

Changes we made to the document while offline on the Intel Core processor-powered tablet were saved locally, and automatically uploaded to SkyDrive Pro once we were back online.



Figure 4: Document editing on the Intel Core processor-powered tablet while offline.

THE SECURITY YOU NEED FOR COLLABORATION IN THE CLOUD

As more businesses move from local to cloud storage, secure collaboration becomes increasingly important. Through SkyDrive Pro, Office 365 provides cloud storage for easy access to documents on multiple devices. How did our test tablets affect document collaboration and security?

Only the Intel Core processor-powered tablet could handle password-protected documents and enable other document protection functionality, such as restricting editing or marking as final.

We found only the Intel Core processor-powered tablet supported encryption and the following functionality in Office 365:

- Word – encrypting with password, restricting editing, restricting access, adding a digital signature, and marking as final
- Excel – encrypting with password, protecting current sheet, protecting workbook structure, restricting access, adding a digital signature, and marking as final
- PowerPoint – encrypting with password, restricting access, adding a digital signature, and marking as final

All these options aren't available through the Office 365 on the iPad, Android tablet, and Windows RT tablet. Not only does this potentially undermine document and data security, it could also disrupt document collaboration. For example, we couldn't

add password protection while working in the Word Web App on these test tablets. What if you simply need to open an encrypted document? You couldn't do that either. We couldn't open a password-protected Word document on the iPad, Android tablet, and Windows RT tablet we tested. Figure 5 shows the alert on the iPad.

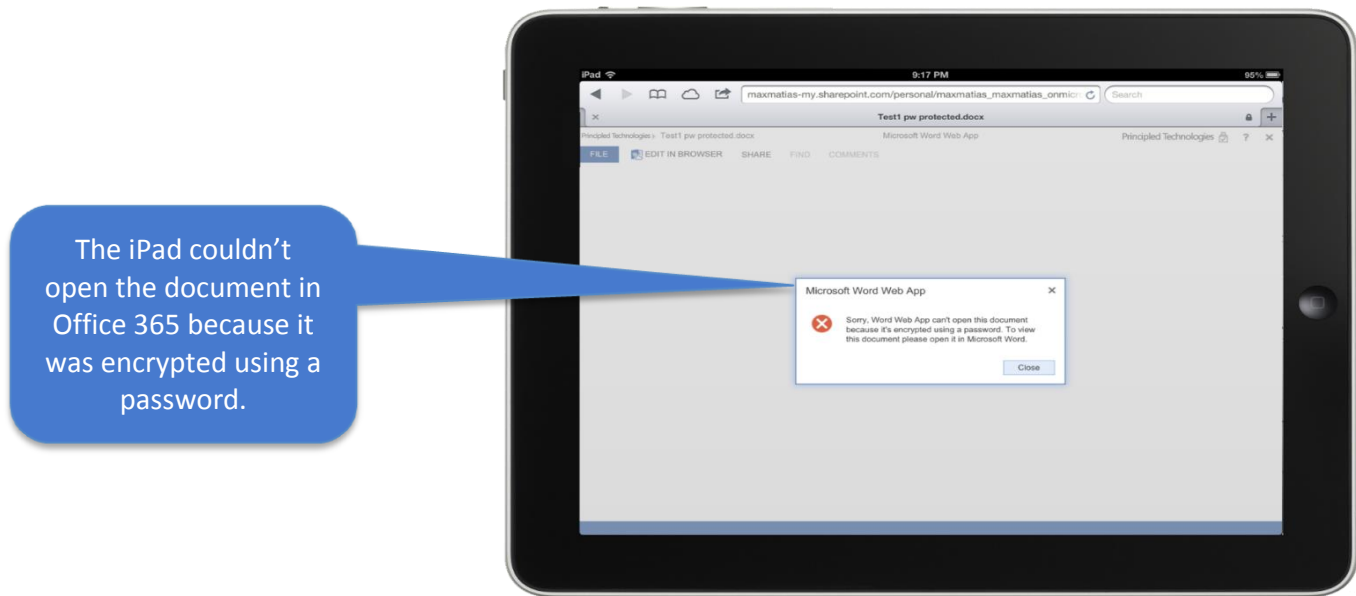


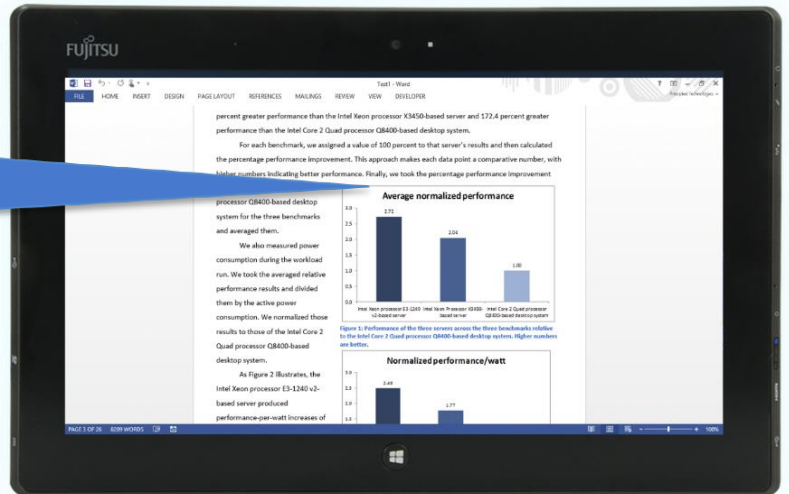
Figure 5: The iPad couldn't open the encrypted document through Office 365.

ALL THE FORMATTING WHEN YOU EDIT DOCUMENTS

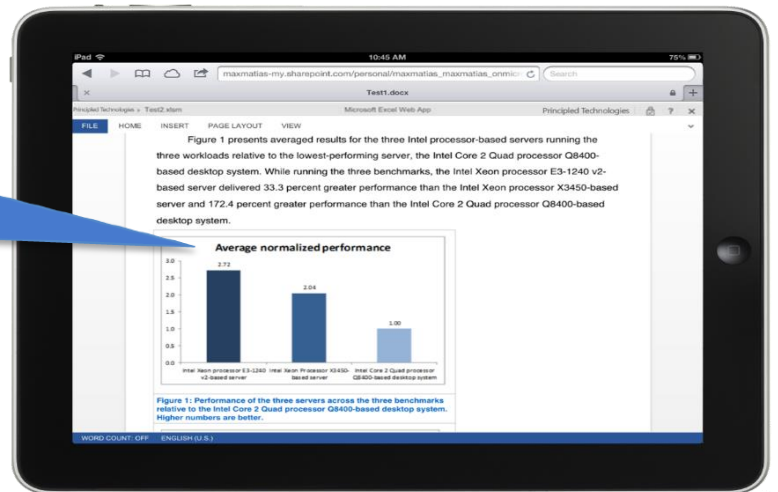
What happens to Word documents when you edit them on a tablet? Using a document drafted in Word 2010, we looked at the document on the Intel Core processor-powered tablet and on the iPad, Android tablet, and Windows RT tablet. While Reading view in the Word Web App through Office 365 on the iPad and Windows RT tablet retained formatting, Editing view on those two tablets did not: only the Intel Core processor-powered tablet provided an editing experience with Office 365 that would be suitable in the office. As Figure 6 illustrates, we found:

- Editing view in the Word Web App on the iPad and Windows RT tablet removed significant document formatting, including missing headers, footers, and styles
- The one read-only view in the Word Web App on the Android tablet had even greater formatting problems, including missing images

The original Word document retained all formatting on the Intel Core processor-powered tablet in the desktop Word application available through Office 365.



In Editing view on the iPad with the same document, the chart was no longer in the same place relative to the text. We found similar formatting loss in Editing view on the Windows RT tablet.



The same Word document lost significant formatting and functionality on the Android tablet with Office 365. The charts were gone, as were any text styles. We also couldn't edit the document.

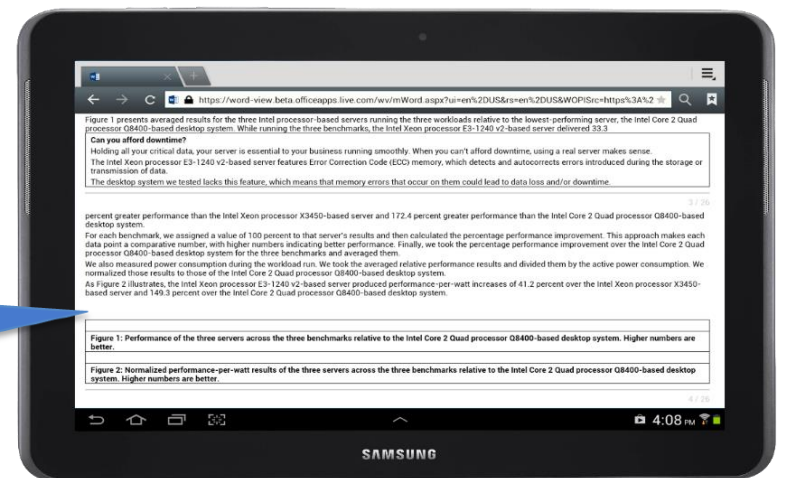


Figure 6: Document formatting when editing on the Intel Core processor-powered tablet, iPad, and Android tablet.

Only the Intel Core processor-powered tablet displayed editable Word documents with full formatting.

We also found that Office 365 on the iPad and Windows RT tablet lacked document creation and review functionality integral to working in Word. For example, the Word Web App lacked a Navigation pane, and we could not view or add comments in Editing view or view the document with markup. We could review spelling on the iPad and Windows RT tablet, but we could not check grammar or use a thesaurus. A number of common Word objects appeared as placeholders and were not editable, including charts, text boxes, and footnotes. While the iPad and Windows RT tablet could possibly be sufficient as consumption devices for Word documents with Office 365, in Editing view they fell far short of the Intel Core processor-powered tablet with the full-featured Word application through Office 365 when editing Word documents.

ALL THE SPREADSHEET FUNCTIONALITY YOU NEED

If you're working on spreadsheets, does it matter which tablet you use? The answer is: unequivocally, yes. We looked at the functionality supported by the Excel desktop application through Office 365 on the Intel Core processor-powered tablet and the Excel Web App through Office 365 on the iPad, Android tablet, and Windows RT tablet. Unlike the Intel Core processor-powered tablet, we found that Office 365 on the other test tablets lacked support for macros, data models, and external data connections for dynamically updated workbooks, as Figure 7 demonstrates on the iPad.

The iPad couldn't show some features in the browser in Office 365, which means we couldn't run the macro in this Excel workbook. We found the same missing functionality on the Android tablet and Windows RT tablet.

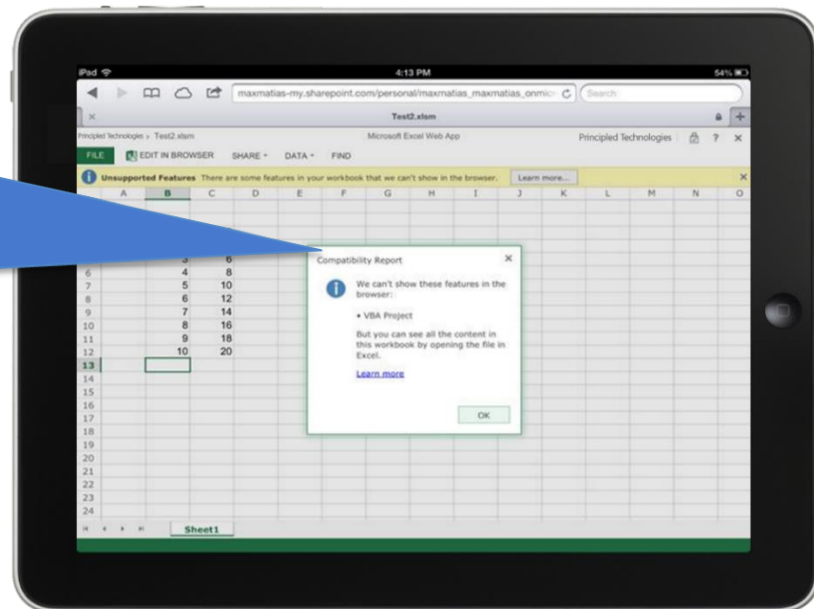


Figure 7: The iPad lacked support for macros through Office 365.

What if you simply need to edit a workbook containing a macro? You couldn't do that either. We found that the Excel Web App requires that you save changes in a

copy that removes any unsupported functionality. Figure 8 shows the unforbearing message that popped up on the iPad.

When we attempted to edit the same workbook containing the macro on the iPad, we found that we could only edit a copy of the workbook that had the macro removed.

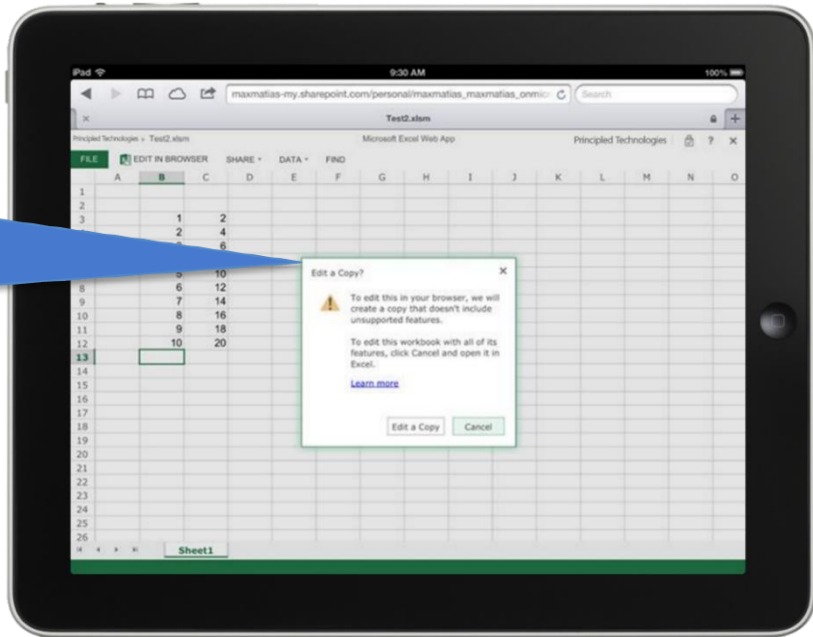


Figure 8: The iPad wouldn't allow us to edit a workbook containing a macro.

We couldn't edit workbooks in Office 365 on the Android tablet, and found it difficult to navigate with a slow touch scrolling response.

The Excel Web App through Office 365 on the iPad, Android tablet, and Windows RT tablet also did not support opening CSV files commonly used in consumer, business, and scientific applications. For example, if you needed to export data from a consumer banking site or enterprise database application, you may be unable to view that data using the Excel Web App on these tablets.

With only beta support in Office 365, we found the Android tablet provided an even more limited experience for end users. This included no support for editing, and no inertial scrolling within the Excel Web App (e.g., the scrolling motion would not continue smoothly after the release of touch), which made navigating worksheets difficult.

PRESENTATIONS THAT MAKE THE RIGHT IMPRESSION

We found no support for slide shows or editing on the Android tablet, and missing slide show functionality in Office 365 on the iPad and Windows RT tablet.

You've prepared a PowerPoint presentation for management or your client. Which tablet is best suited for the job? If you brought your Android tablet from home to share the presentation, you'd be out of luck. We found that the representative Android tablet lacked support for slide shows in Office 365. What about the PowerPoint Web App through Office 365 on the iPad and the representative Windows RT tablet? While you would be able to share the presentation, we found that you would experience the following issues in the PowerPoint Web App on the iPad and Windows RT tablet:

- No ability to record the slide show or rehearse timings
- Support for only fade and push transition styles, as Figure 9 shows, and limited animation support (e.g., unsupported animations and transitions in the presentation were simply missing)
- No support for linked pictures, so they disappeared from the slide show

The iPad only supported fade and push transitions between slides, while the Intel Core processor-powered tablet provided 47 different transition styles in the PowerPoint desktop application through Office 365.

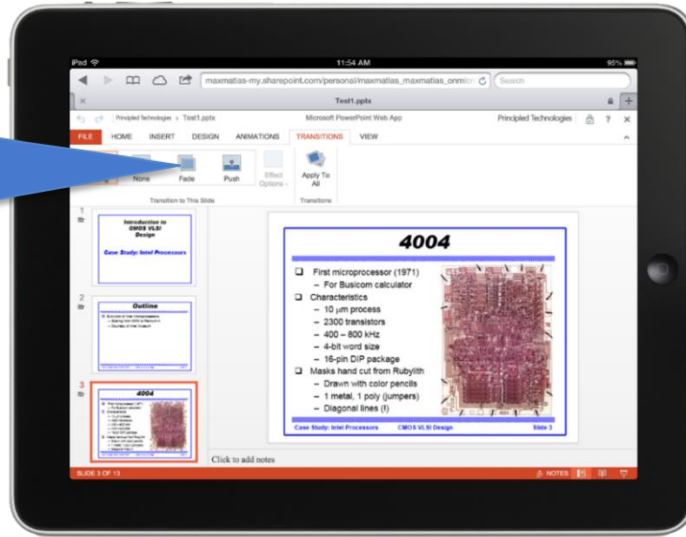


Figure 9: The iPad supported 45 fewer transition styles.

We found that only the Intel Core processor-powered tablet supported the full PowerPoint experience through the Office 365 desktop application, with no missing functionality when presenting slide shows or creating them. The PowerPoint Web App through Office 365 on the iPad and Windows RT tablet did not support viewing and adding comments in Editing view. The PowerPoint Web App on the Android tablet didn't display comments at all. The iPad, Android tablet, and Windows RT tablet also did not support viewing or editing master views in Office 365.

STAYING ON TOP OF EMAIL MESSAGES AND MEETINGS

Only the Intel Core processor-powered tablet provided PST support for archived messages, advanced insert options, and custom due date options for flagged messages.

Office 365 subscription licensing also includes hosted email with 25 GB of storage space per user. Which tablet helps you get to the meeting on time? As with the other Office applications, we found missing functionality on the iPad, Android tablet, and Windows RT tablet. In the Outlook desktop application through Office 365, only the Intel Core processor-powered tablet offered:

- PST support for archived messages
- Message management through Quick Steps
- Due date options other than the current day for flagged messages

- Advanced insert options, including tables, charts, screenshots, and business cards

While the Office 365 experience for Word, Excel, and PowerPoint was similar on the iPad and Windows RT tablet, we found that the iPad supported fewer Outlook options than the Windows RT tablet through Office 365. Instead of the Outlook Web App that the Windows RT tablet supported, the iPad had access only to Outlook Mobile through Office 365, which Figure 10 shows.

Instead of the full Outlook Web App, the iPad could only access Outlook Mobile, which lacked much of the functionality available in Office 365 on the Intel Core processor-powered tablet.



Figure 10: Outlook Mobile splash screen on the Apple iPad.

The iPad didn't have integral message composition functionality, such as text formatting and bulleted lists, while the Android tablet did not support push message delivery.

With Outlook Mobile, the iPad lacked support for the following integral functionality:

- Text formatting (e.g., italics)
- Paragraph options (e.g., bulleted lists)
- Access to the local file system for attachments, which limited insertion options to signatures and images in the camera roll
- Notifications for reminders for calendar appointments or meetings

On the Android tablet, we were able to view only the traditional Outlook Web Access through Office 365, which we found to be even more limited in functionality than Outlook Mobile on the iPad. For example, the Android tablet lacked push message delivery, and did not support creating reminders or viewing notifications for calendar appointments or meetings.

FOR A TABLET THAT'S UP FOR THE JOB, CHOOSE INTEL INSIDE®

A business tablet needs to be more than just a pretty screen – it also needs to handle common tasks with Office 365 without workarounds and error messages, and do

it quickly. A tablet powered by an Intel Core processor provided the full functionality of Office 365, both online and offline, which means you could be productive and collaborate securely wherever you happened to be working. As Figure 11 shows, the Intel Core processor-powered tablet gave the green light to get real work done in the office.

Office 365 business experience	Intel Core processor-powered tablet	Apple iPad	Android tablet	Windows RT tablet
More working, less waiting				
Getting work done when not connected				
The security you need for collaboration in the cloud				
All the formatting when you edit documents				
All the spreadsheet functionality you need				
Presentations that make the right impression				
Staying on top of email messages and meetings				
All the Office 365 application deployment options				

Figure 11: Office 365 business experience on the test tablets.

APPENDIX A – SYSTEM CONFIGURATION INFORMATION

Figure 12 provides configuration information for the representative tablets: an Intel Core i3-3217U processor-based Fujitsu® STYLISTIC Q702 Hybrid Tablet PC, an Apple iPad (4th generation), a Samsung Galaxy Tab 2 10.1 running Android 4.1.1, and a Microsoft Surface® RT running Windows RT. The available keyboard dock for the Fujitsu STYLISTIC Q702 Hybrid Tablet PC adds a four-cell Lithium-ion battery with a rated capacity of 45 Wh, two UBS 2.0 ports, and both VGA and LAN interfaces.

System	Intel Core processor-powered tablet	Apple iPad (4 th generation)	Representative Android tablet	Representative Windows RT tablet
General				
Number of processor packages	1	1	1	1
Number of cores per processor	2	2	2	4
Number of hardware threads per core	2	1	1	1
Total number of threads	4	2	2	4
System dimensions (length x width x height)	11.9" x 7.7" x 0.5"	9.5" x 7.3" x 0.4"	10.1" x 6.9" x 0.4"	10.8" x 6.8" x 0.4"
System weight	1.9 lbs.	1.5 lbs.	1.3 lbs.	1.5 lbs.
CPU				
Vendor	Intel	Apple	Texas Instruments	NVIDIA®
Model number	Core i3-3217U	A6X	OMAP 4430	Tegra® 3
Core frequency (GHz)	1.8	1.4	1.0	1.3
L1 cache	32 KB + 32 KB (per core)	32 KB + 32 KB	32 KB + 32 KB	32 KB + 32 KB (per core)
L2 cache	512 KB (256 KB per core)	1 MB	1 MB	1 MB (256 KB per core)
L3 cache	3 MB	N/A	N/A	N/A
Memory				
Amount of RAM (GB)	4	1	1	2
Speed (MHz)	1,600	533	400	1,500
Type	DDR3	DDR2	DDR2	DDR3
Hard disk				
Vendor and model number	Samsung MZMPC064HBDR	Integrated flash storage	Integrated flash storage	Integrated flash storage
Size (GB)	64	64	16	64
Operating system				
Name	Microsoft Windows 8 Pro	Apple iOS 6.1.3	Android 4.1.1	Microsoft Windows RT

System	Intel Core processor-powered tablet	Apple iPad (4 th generation)	Representative Android tablet	Representative Windows RT tablet
Stock browser				
Name and version number	Modern UI Internet Explorer® (IE) 10.0.9200.16540	Mobile Safari® 6.0 8536.25	Internet 4.1.1-P5113UECLK7	Modern UI Internet Explorer (IE) 10.0.9200.16540
Graphics				
Vendor and model number	Intel HD Graphics 4000	PowerVR SGX554MP4	PowerVR SGX540	NVIDIA Tegra 3
Resolution	1,366 x 768	2,048 x 1,536	1,280 x 800	1,366 x 768
Wireless				
Vendor and model number	Qualcomm® Atheros AR938x 802.11abgn	802.11a/b/g/n	802.11a/b/g/n	Marvell® AVASTAR® Wireless-N
Ethernet				
Vendor and model number	Intel 82579V Gigabit	N/A	N/A	N/A
Ports				
USB type	1 x USB 2.0, 1 x USB 3.0	N/A	N/A	1 x USB 2.0
Other	HDMI, media card reader, headphone jack, microphone jack	Headphone jack	Micro SD, headphone jack	Micro HDMI, Micro SD, headphone jack
Display				
Type	LED-backlit AH-IPS anti-glare LCD display	LED-backlit Multi-Touch display with IPS technology	LED-backlit PLS TFT touchscreen display	LED-backlit ClearType HD Display
Screen size	11.6"	9.7"	10.1"	10.6"
Battery				
Type	3-Cell Li-polymer	Apple A1389 integrated Li-polymer	Built-in Lithium Ion	Built-in Lithium Ion
Rated capacity	34 Wh	42.5 Wh	7,000 mAh	31.5 Wh

Figure 12: Configuration information for the tablets we tested.

APPENDIX B – TIME TO OPEN DOCUMENTS FOR EDITING RESULTS

Figure 13 presents the detailed results of our testing.

Time to open for editing	Intel processor-powered tablet (Local applications)	Intel processor-powered tablet (Office on Demand)	Apple iPad (Office Web Apps)	Windows RT tablet (Office Web Apps)
Word document	00:02.93	00:07.02	00:16.33	00:23.98
Excel workbook	00:03.41	00:07.65	00:16.70	00:21.32
PowerPoint presentation	00:03.15	00:07.51	00:17.56	00:20.96

Figure 13: Time, in seconds, for the tablets to open documents for editing.

APPENDIX C – OFFICE APPLICATION FEATURES FUNCTIONALITY

Figure 14 gives a detailed feature and functionality comparison of the full-featured versions of Word, Excel, and PowerPoint on the Intel Core processor-powered tablet and the respective Office Web Apps on the Apple iPad and representative Windows RT tablet. Because the Android tablet did not support editing, we did not include it here.

Office desktop applications on the Intel Core processor-powered tablet through Office 365	Office Web Apps on the Apple iPad and representative Windows RT tablet through Office 365
Office 365 Word desktop application	Office 365 Word Web App
All formatting retained	Significant formatting loss in Editing View (formatting retained in Reading view)
Track changes support	No viewing markups or tracking changes
View and add comments in Editing and Reading View	View and add comments in Reading View only
View, edit, and save .doc and .docx formats	View .doc but only edit and save .docx format
Full RTF, HTML, MHTML, and PDF support	No RTF, HTML, MHTML, and PDF support
Print Layout, Full Screen, Web Layout, Outline, and Draft document views	Only Print Layout View supported
Advanced ruler and grid line support	No ruler or grid line support
Navigation pane with heading shortcuts	No document navigation pane available
Editing of margins, page breaks, cover pages, headers, and footers	Page formatting features not displayed in Edit View
Advanced format options for pasted text	No paste format options, must be done afterwards
Create and edit styles	Cannot create or edit styles
Adjustable line spacing	Cannot adjust line spacing
Find and replace in both Edit and Reading Views	Find function only available in Reading View, no replace function available
Page layout options including page margins, page orientation, and columns	Page layout options cannot be edited
Page break insertion and view	Page breaks are not indicated
Theme and document background editing	Theme and document background cannot be edited
Insert and edit tables	Display only, no editing or insertion functions
Picture cropping and editing support	No editing functions available
Insert and edit headers and footers	Displayed only in Reading View, no editing or insertion functions
Insert and edit charts, equations, ink, WordArt, shapes, text boxes, and symbols.	Display only, no editing or insertion functions
Create and edit table of contents, footnotes, and endnotes	Placeholders for existing features, no editing capabilities
Create and edit signature line	Signature line editing not available
Spell and Grammar check	Spell check only
Thesaurus and Translate support	No Thesaurus or Translate support
Password encryption support	No password encryption, cannot open files
View and edit documents that require a password to edit	Can view these documents in Reading View, but not edit them
Integrated document version history	Must use external document version history

Office desktop applications on the Intel Core processor-powered tablet through Office 365	Office Web Apps on the Apple iPad and representative Windows RT tablet through Office 365
Office 365 Excel desktop application	
Office 365 Excel Web App	
View, edit, and save .xls and .xlsx formats	View .xls but only edit and save .pptx format
Full CSV file format support	CSV file format is generally not supported
ActiveX and form tool bar controls	Spreadsheets with this functionality will not open
Data validation and digital signature support	Spreadsheets with these functionality will not open
Shapes and XML support	Spreadsheets with these functionality will not open
Password encryption support	No password encryption, cannot open files
NOW and TODAY values based on local time zone	NOW and TODAY values based on server time zone
INFO function support	INFO function displays #VALUE! error
Integrated shared workbook management	Shared workbooks disable Undo and Redo functions
Full macro creation and editing support	Macros disabled in all workbooks
External data dynamically linked	No external data support
Data modeling	No data modeling support
Office 365 PowerPoint desktop application	
Office 365 PowerPoint Web App	
View, edit, and save .ppt and .pptx formats	View .ppt but only edit and save .pptx format
RTF and PDF support	No RTF and PDF support
Normal, Slide Sorter, Notes page, Reading, and all three Master views	Normal and Reading views
Over 30 slide animation and transition options	Only two transitions supported – wipe and fade
Password encryption support	No password encryption, cannot open files
Spell and Grammar check	Spell check only
Thesaurus and Translate support	No Thesaurus or Translate support
View and add comments in reading and editing mode	View and add comments in reading mode only
Advanced format options for pasted text	No paste format options, must be done afterwards
Text find and replace functions	No text find and replace function
Create and modify presentation themes	Cannot create or modify themes
Edit slide master and layout options	Cannot edit slide master and layout options
Insert and edit ActiveX controls and OLE objects	Display only, no editing or insertion functions
Playback, edit, and add new audio and video content	Playback only, cannot edit or add new content
Insert and edit tables	Display only, no editing or insertion functions
Full linked picture support	Linked pictures are preserved, but not displayed
Insert and edit headers and footers	Display only, no editing or insertion functions
Insert and edit charts, equations, ink, WordArt and symbols.	Display only, no editing or insertion functions

Figure 14: Functionality comparison for Word, Excel, and PowerPoint through Office 365.

Figure 15 gives a detailed functionality comparison of Outlook on the Intel Core processor-powered tablet, Outlook Mobile on the Apple iPad, and the Outlook Web App on the representative Windows RT tablet. Note: The Apple iPad has access only to Outlook Mobile, which has less functionality than the Outlook Web App on the representative Windows RT tablet.

Outlook desktop application on the Intel Core processor-powered table through Office 365	Outlook Mobile on the Apple iPad through Office 365	Outlook Web App on the representative Windows RT tablet through Office 365
PST support	No PST support	No PST support
Rich text, HTML, Plain text, or Rich text	HTML only	HTML or Plain text
Quick Steps support	No Quick Steps support	No Quick Steps support
Text styles, underline, bold, and italics	Plain text only	Text styles, underline, bold, and italics
Bullets, numbering, indent, and lists	No paragraph options	Bullets, numbering, indent, and lists
View, Create, and edit Task items	No Task pane	View, Create, and edit Task items
Spell and Grammar check	Spell check only	Spell check only
Thesaurus and Translate support	No Thesaurus or Translate support	No Thesaurus or Translate support
Message spelling and Grammar review upon send	No message review available	No message review available
Attach files	Attach files	Attach files
Insert images, signature, business card, table, and shapes	Insert camera roll or photo stream images and signature only	Insert images and signature only
Full message status flagging and color categorization	Flagging for follow up only	Full message status flagging and color categorization
Set and receive calendar reminders	Set calendar reminders only	Set and receive calendar reminders
Send and receive meeting invites	Receive meeting invites	Send and receive meeting invites
Organize messages by Date, Sender, Recipient, Flag, Category, Size, Subject, Type, Attachments, and Importance	Organize messages by Sender, Recipient, and Conversation	Organize messages by Date, Sender, Recipient, Flag, Category, Size, Subject, Type, Attachments, and Importance
Categorize appointment priority	No appointment categorization	Categorize appointment priority

Figure 15: Outlook functionality comparison through Office 365.

APPENDIX D – OFFICE 365 APPLICATION DEPLOYMENT OPTIONS

On the Intel Core processor-powered tablet, Office 365 licensing gives you multiple options to use Office desktop applications with full features and functionality, including local install, Office on Demand streaming, and Microsoft Application Virtualization. For more detail on Office 365 plans for business, visit

<http://office.microsoft.com/en-001/business/compare-office-365-for-business-plans-FX102918419.aspx>.

Office 365 desktop applications installed locally

Unlike the other tablets we tested, the Intel Core processor-powered tablet has the processing power to provide users with a traditional desktop application experience in tablet form. By installing Office desktop applications directly on the system, you can easily work with full Office desktop applications while offline through Office 365. You can save files locally on the Intel Core processor-powered tablet or in the cloud through SkyDrive Pro.

Office 365 desktop applications through Office on Demand

Office on Demand lets you stream full Office desktop applications to the Intel Core processor-powered tablet, and as with locally installed desktop applications, work with documents that you save locally or in the cloud on SkyDrive Pro. Streaming means that you always have the latest Office application version without managing updates and security patches. Once Office on Demand streams the application, it supports offline document editing. When working offline with documents stored in SkyDrive Pro, any changes that you make are stored locally and then synchronized with SkyDrive Pro once you are back online. For details about Office on Demand, visit <http://office.microsoft.com/en-us/office365-sharepoint-online-enterprise-help/use-office-on-demand-HA103337813.aspx>.

Office 365 desktop applications through Microsoft Application Virtualization (App-V)

Office 365 also lets you deploy full Office desktop applications on the Intel Core processor-powered tablet using App-V without installing them locally. You can deploy custom Office desktop application packages using either a standalone App-V server or through integration with Microsoft System Center Configuration Manager 2012 SP1. These virtual Office applications offer a similar experience to locally installed applications, including the ability to work offline. For more on App-V, visit <http://www.microsoft.com/en-us/windows/enterprise/products-and-technologies/virtualization/app-v.aspx>.

APPENDIX E - HOW WE TESTED

We applied all available operating system updates and browser updates prior to our feature and functionality analysis and timing how long it took to open documents for editing. We uploaded all test documents to the SkyDrive Pro document library for access on the test systems, and set up SkyDrive Pro synchronization on the Intel Core processor-powered tablet, which created a local folder that served as a mapped drive of the SkyDrive Pro document library. For Office on Demand on the Intel Core processor-powered tablet, we installed the required Internet Explorer add-on.

For timing how long it took to open documents for editing, we followed the steps outlined below. For Office on Demand on the Intel Core processor-powered tablet, we used the stock Modern UI Internet Explorer browser. For the Office Web apps on the iPad and the representative Windows RT tablet, we used the stock Safari and Modern UI Internet Explorer browsers, respectively. We did not include the representative Android tablet in this comparison, since the Office Web Apps did not support editing in the stock Android or Chrome browsers on the Android tablet.

Opening documents on the Intel Core processor-powered tablet using locally installed Office desktop applications

Opening Word document – time to open Word document for editing

1. Reboot the system, and wait 5 minutes at the Start screen.
2. Tap the Desktop tile.
3. Tap to open Windows Explorer from the taskbar.
4. Tap to open the SkyDrive Pro folder under Favorites.
5. Tap to highlight Test1.docx, and long-press to bring up the right-click menu.
6. Simultaneously start the timer and tap Open.
7. Stop the timer when the Microsoft Word document is fully displayed.
8. Close the document.
9. Repeat steps 1 through 8 two more times, and report the median of the three runs.

Opening Excel workbook – time to open Excel workbook for editing

1. Reboot the system, and wait 5 minutes at the Start screen.
2. Tap the Desktop tile.
3. Tap to open Windows Explorer from the taskbar.
4. Tap to open the SkyDrive Pro folder under Favorites.
5. Tap to highlight Test1.xlsx, and long-press to bring up the right-click menu.
6. Simultaneously start the timer and tap Open.
7. Stop the timer when the Microsoft Excel workbook is fully displayed.
8. Close the workbook.
9. Repeat steps 1 through 8 two more times, and report the median of the three runs.

Opening PowerPoint presentation – time to open PowerPoint presentation for editing

1. Reboot the system, and wait 5 minutes at the Start screen.
2. Tap the Desktop tile.
3. Tap to open Windows Explorer from the taskbar.
4. Tap to open the SkyDrive Pro folder under Favorites.
5. Tap to highlight Test1.pptx, and long-press to bring up the right-click menu.
6. Simultaneously start the timer and tap Open.
7. Stop the timer when the Microsoft PowerPoint presentation is fully displayed.
8. Close the presentation.
9. Repeat steps 1 through 8 two more times, and report the median of the three runs.

Opening documents on the Intel Core processor-powered tablet using Office desktop applications streamed via Office on Demand

Opening Word document – time to open Word document for editing

1. Reboot the system, and wait 5 minutes at the Start screen.
2. Tap the Internet Explorer tile.
3. Swipe up from the bottom of the screen to bring up the address bar and list of active tabs.
4. Tap to close the active Internet Explorer tab.
5. Tap the address bar, type `login.microsoftonline.com` and tap Go.
6. Enter the username and password, and tap Enter.
7. Tap SkyDrive.
8. Tap USE OFFICE ON DEMAND, and tap Word.
9. Tap Open Other Documents.
10. Tap Computer, and tap Browse.
11. Tap to open the SkyDrive folder under Favorites.
12. Tap to highlight Test1.docx.
13. Simultaneously start the timer and tap Open.
14. Stop the timer when the Microsoft Word document is fully displayed.
15. Close the document.
16. Repeat steps 1 through 15 two more times, and report the median of the three runs.

Opening Excel workbook – time to open Excel workbook for editing

1. Reboot the system, and wait 5 minutes at the Start screen.
2. Tap the Internet Explorer tile.
3. Swipe up from the bottom of the screen to bring up the address bar and list of active tabs.
4. Tap to close the active Internet Explorer tab.
5. Tap the address bar, type `login.microsoftonline.com` and tap Go.
6. Enter the username and password, and tap Enter.
7. Tap SkyDrive.
8. Tap USE OFFICE ON DEMAND, and tap Excel.
9. Tap Open Other Workbooks.
10. Tap Computer, and tap Browse.
11. Tap to open the SkyDrive folder under Favorites.
12. Tap to highlight Test1.xlsx.
13. Simultaneously start the timer and tap Open.
14. Stop the timer when the Microsoft Excel workbook is fully displayed.
15. Close the workbook.
16. Repeat steps 1 through 15 two more times, and report the median of the three runs.

Opening PowerPoint presentation – time to open PowerPoint presentation for editing

1. Reboot the system, and wait 5 minutes at the Start screen.
2. Tap the Internet Explorer tile.
3. Swipe up from the bottom of the screen to bring up the address bar and list of active tabs.
4. Tap to close the active Internet Explorer tab.
5. Tap the address bar, type `login.microsoftonline.com` and tap Go.
6. Enter the username and password, and tap Enter.
7. Tap SkyDrive.
8. Tap USE OFFICE ON DEMAND, and tap PowerPoint.

9. Tap Open Other Presentations.
10. Tap Computer, and tap Browse.
11. Tap to open the SkyDrive folder under Favorites.
12. Tap to highlight Test1.pptx.
13. Simultaneously start the timer and tap Open.
14. Stop the timer when the Microsoft PowerPoint presentation is fully displayed.
15. Close the presentation.
16. Repeat steps 1 through 15 two more times, and report the median of the three runs.

Opening documents on the Apple iPad using Office Web Apps through the default Safari browser

Opening Word document – time to open Word document for editing

1. Reboot the system, and wait 5 minutes at the Home screen.
2. Tap the address bar, type `login.microsoftonline.com` and tap Go.
3. Enter the username and password, and tap Go.
4. Tap SkyDrive.
5. Simultaneously start the timer and tap Test1.docx to open the document.
6. Stop the timer when the Microsoft Word document is fully displayed.
7. Simultaneously restart the timer and tap EDIT IN BROWSER to display the document in Editing View.
8. Stop the timer when the Microsoft Word document is fully displayed.
9. Tap to close the active Safari tab.
10. Press the Home button to exit Safari, and tap the Settings icon.
11. Tap Safari under Settings.
12. Tap Clear History, and tap Clear Cookies and Data.
13. Press the Home button to exit Settings.
14. Repeat steps 1 through 13 two more times, and report the median of the three runs.

Opening Excel workbook – time to open Excel workbook for editing

1. Reboot the system, and wait 5 minutes at the Home screen.
2. Tap the Safari icon.
3. Tap the address bar, type `login.microsoftonline.com` and tap Go.
4. Enter the username and password, and tap Go.
5. Tap SkyDrive.
6. Simultaneously start the timer and tap Test1.xlsx to open the workbook.
7. Stop the timer when the Microsoft Excel workbook is fully displayed.
8. Simultaneously restart the timer and tap EDIT IN BROWSER to display the workbook in Editing View.
9. Stop the timer when the Microsoft Excel workbook is fully displayed.
10. Tap to close the active Safari tab.
11. Press the Home button to exit Safari, and tap the Settings icon.
12. Tap Safari under Settings.
13. Tap Clear History, and tap Clear Cookies and Data.
14. Press the Home button to exit Settings.
15. Repeat steps 1 through 13 two more times, and report the median of the three runs.

Opening PowerPoint presentation – time to open PowerPoint presentation for editing

1. Reboot the system, and wait 5 minutes at the Home screen.
2. Tap the Safari icon.
3. Tap the address bar, type `login.microsoftonline.com` and tap Go.
4. Enter the username and password, and tap Go.

5. Tap SkyDrive.
6. Simultaneously start the timer and tap Test1.xlsx to open the workbook.
7. Stop the timer when the Microsoft PowerPoint presentation is fully displayed.
8. Simultaneously restart the timer and tap EDIT IN BROWSER to display the presentation in Editing View.
9. Stop the timer when the Microsoft PowerPoint presentation is fully displayed.
10. Tap to close the active Safari tab.
11. Press the Home button to exit Safari, and tap the Settings icon.
12. Tap Safari under Settings.
13. Tap Clear History, and tap Clear Cookies and Data.
14. Press the Home button to exit Settings.
15. Repeat steps 1 through 14 two more times, and report the median of the three runs.

Opening documents on the representative Windows RT tablet using Office Web Apps through the default Modern UI Internet Explorer browser

Opening Word document – time to open Word document for editing

1. Reboot the system, and wait 5 minutes at the Start screen.
2. Tap the Internet Explorer tile.
3. Swipe up from the bottom of the screen to bring up the address bar and list of active tabs.
4. Tap to close the active Internet Explorer tab.
5. Tap the address bar, type `login.microsoftonline.com` and tap Go.
6. Enter the username and password, and tap Enter.
7. Tap SkyDrive.
8. Simultaneously start the timer and tap Test1.docx to open the document.
9. Stop the timer when the Microsoft Word document is fully displayed.
10. Tap EDIT DOCUMENT.
11. Simultaneously restart the timer and tap Edit in Word Web App to display the document in Editing View.
12. Stop the timer when the Microsoft Word document is fully displayed.
13. Swipe up from the bottom of the screen to bring up the address bar and list of active tabs.
14. Tap to close the active Internet Explorer tab.
15. Swipe in from the right to bring up the charms bar, and tap the Settings charm.
16. Tap Delete Browsing History.
17. Swipe down from the top of the screen to close Internet Explorer.
18. Repeat steps 1 through 17 two more times, and report the median of the three runs.

Opening Excel workbook – time to open Excel workbook for editing

1. Reboot the system, and wait 5 minutes at the Start screen.
2. Tap the Internet Explorer tile.
3. Swipe up from the bottom of the screen to bring up the address bar and list of active tabs.
4. Tap to close the active Internet Explorer tab.
5. Tap the address bar, type `login.microsoftonline.com` and tap Go.
6. Enter the username and password, and tap Enter.
7. Tap SkyDrive.
8. Simultaneously start the timer and tap Test1.xlsx to open the workbook.
9. Stop the timer when the Microsoft Excel workbook is fully displayed.
10. Tap EDIT WORKBOOK.
11. Simultaneously restart the timer and tap Edit in Excel Web App to display the workbook in Editing View.
12. Stop the timer when the Microsoft Excel workbook is fully displayed.
13. Swipe up from the bottom of the screen to bring up the address bar and list of active tabs.
14. Tap to close the active Internet Explorer tab.

15. Swipe in from the right to bring up the charms bar, and tap the Settings charm.
16. Tap Delete Browsing History.
17. Swipe down from the top of the screen to close Internet Explorer.
18. Repeat steps 1 through 17 two more times, and report the median of the three runs.

Opening PowerPoint presentation – time to open PowerPoint presentation for editing

1. Reboot the system, and wait 5 minutes at the Start screen.
2. Tap the Internet Explorer tile.
3. Swipe up from the bottom of the screen to bring up the address bar and list of active tabs.
4. Tap to close the active Internet Explorer tab.
5. Tap the address bar, type `login.microsoftonline.com` and tap Go.
6. Enter the username and password, and tap Enter.
7. Tap SkyDrive.
8. Simultaneously start the timer and tap Test1.pptx to open the presentation.
9. Stop the timer when the Microsoft PowerPoint presentation is fully displayed.
10. Tap EDIT PRESENTATION.
11. Simultaneously restart the timer and tap Edit in PowerPoint Web App to display the presentation in Editing View.
12. Stop the timer when the Microsoft PowerPoint presentation is fully displayed.
13. Swipe up from the bottom of the screen to bring up the address bar and list of active tabs.
14. Tap to close the active Internet Explorer tab.
15. Swipe in from the right to bring up the charms bar, and tap the Settings charm.
16. Tap Delete Browsing History.
17. Swipe down from the top of the screen to close Internet Explorer.
18. Repeat steps 1 through 17 two more times, and report the median of the three runs.

APPENDIX F – TEST DOCUMENT PROPERTIES

Figure 16 details properties of the Office documents we used for timing how quickly each tablet could open documents for editing.

File type	File name	File size
Word document	Test1.docx	1,692 KB
Excel workbook	Test1.xlsx	2,569 KB
PowerPoint presentation	Test1.pptx	2,294 KB

Figure 16: Test document properties.

ABOUT PRINCIPLED TECHNOLOGIES



Principled Technologies, Inc.
1007 Slater Road, Suite 300
Durham, NC, 27703
www.principledtechnologies.com

We provide industry-leading technology assessment and fact-based marketing services. We bring to every assignment extensive experience with and expertise in all aspects of technology testing and analysis, from researching new technologies, to developing new methodologies, to testing with existing and new tools.

When the assessment is complete, we know how to present the results to a broad range of target audiences. We provide our clients with the materials they need, from market-focused data to use in their own collateral to custom sales aids, such as test reports, performance assessments, and white papers. Every document reflects the results of our trusted independent analysis.

We provide customized services that focus on our clients' individual requirements. Whether the technology involves hardware, software, Web sites, or services, we offer the experience, expertise, and tools to help our clients assess how it will fare against its competition, its performance, its market readiness, and its quality and reliability.

Our founders, Mark L. Van Name and Bill Catchings, have worked together in technology assessment for over 20 years. As journalists, they published over a thousand articles on a wide array of technology subjects. They created and led the Ziff-Davis Benchmark Operation, which developed such industry-standard benchmarks as Ziff Davis Media's Winstone and WebBench. They founded and led eTesting Labs, and after the acquisition of that company by Lionbridge Technologies were the head and CTO of VeriTest.

Principled Technologies is a registered trademark of Principled Technologies, Inc.
All other product names are the trademarks of their respective owners.

Disclaimer of Warranties; Limitation of Liability:

PRINCIPLED TECHNOLOGIES, INC. HAS MADE REASONABLE EFFORTS TO ENSURE THE ACCURACY AND VALIDITY OF ITS TESTING, HOWEVER, PRINCIPLED TECHNOLOGIES, INC. SPECIFICALLY DISCLAIMS ANY WARRANTY, EXPRESSED OR IMPLIED, RELATING TO THE TEST RESULTS AND ANALYSIS, THEIR ACCURACY, COMPLETENESS OR QUALITY, INCLUDING ANY IMPLIED WARRANTY OF FITNESS FOR ANY PARTICULAR PURPOSE. ALL PERSONS OR ENTITIES RELYING ON THE RESULTS OF ANY TESTING DO SO AT THEIR OWN RISK, AND AGREE THAT PRINCIPLED TECHNOLOGIES, INC., ITS EMPLOYEES AND ITS SUBCONTRACTORS SHALL HAVE NO LIABILITY WHATSOEVER FROM ANY CLAIM OF LOSS OR DAMAGE ON ACCOUNT OF ANY ALLEGED ERROR OR DEFECT IN ANY TESTING PROCEDURE OR RESULT.

IN NO EVENT SHALL PRINCIPLED TECHNOLOGIES, INC. BE LIABLE FOR INDIRECT, SPECIAL, INCIDENTAL, OR CONSEQUENTIAL DAMAGES IN CONNECTION WITH ITS TESTING, EVEN IF ADVISED OF THE POSSIBILITY OF SUCH DAMAGES. IN NO EVENT SHALL PRINCIPLED TECHNOLOGIES, INC.'S LIABILITY, INCLUDING FOR DIRECT DAMAGES, EXCEED THE AMOUNTS PAID IN CONNECTION WITH PRINCIPLED TECHNOLOGIES, INC.'S TESTING. CUSTOMER'S SOLE AND EXCLUSIVE REMEDIES ARE AS SET FORTH HEREIN.
